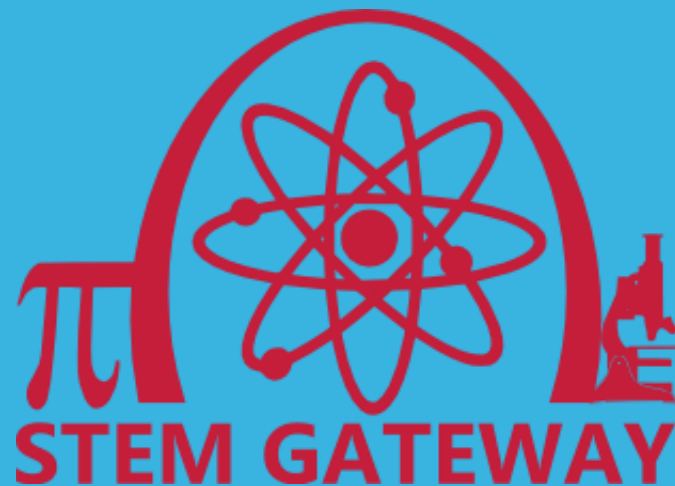


STEM GATEWAY

COURSES AND ACTIVITIES

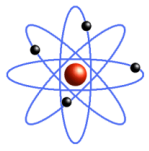
[HTTP://UNMSTEMGATEWAY.BLOGSPOT.COM/](http://unmstemgateway.blogspot.com/)

(ACTIVITIES TAB)



COURSES

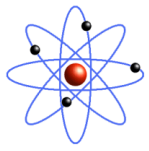
STEM STUDENT INTEREST GROUPS & STEM ACADEMIES



STEM STUDENT INTEREST GROUP COURSES

Courses that were designed to help students:

- Engage with the connections between STEM disciplines
- Develop a broader understanding of science as a way of knowing and thinking
- Develop effective learning habits, and critical thinking skills

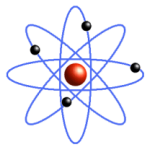


STEM ACADEMIES

Courses that were co-taught by STEM Gateway partners (El Centro, CEP and Womens Resource Center) and STEM graduate students or instructors.

Courses were designed to help students:

- Engage with the connections between STEM disciplines**
- Develop effective learning habits, and critical thinking skills**
- Explore ways to change the world through STEM**

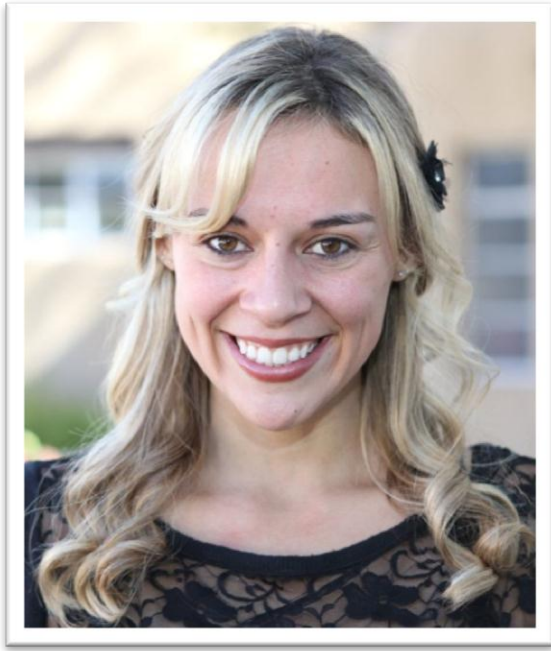


SSIG AND ACADEMY OUTCOMES

- Impacted 142 students over the course of the first two years
- Offered 22 sections
- Success rates rose from 80% in the Fall 2012 to 91% in the Fall 2013
- 95% of students reported that these courses prepared them to succeed in their entry-level science and math courses
- However, the average section size of 6.5 students was not sustainable. As a result, the Principal Investigators and Project Staff received permission from the program officer to develop alternative strategies to the “add-on” course.

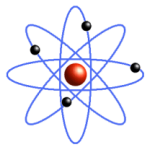
SPECIAL THANKS TO...

Audriana Stark, SSIG Coordinator



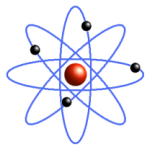
The background consists of several overlapping triangles. A large orange triangle is on the right side, pointing towards the top right. On the left side, there are two blue triangles: a lighter blue one on top and a darker blue one on the bottom, both pointing towards the bottom left. The remaining space is white.

ACTIVITIES



FALL 2014 INITIATIVES

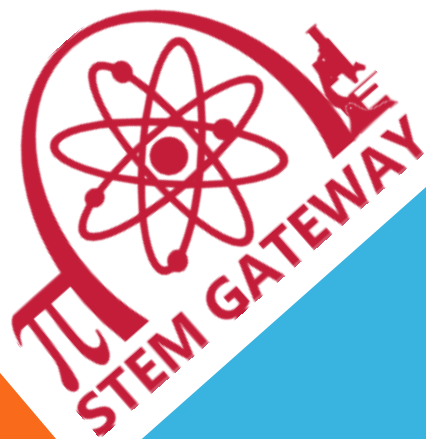
- **Students for STEM Success**
 - Student run workshops and activities
- **STEM Lunch workshops at the SUB**
 - Working on partnership with Student Centers
- **Biology Labs Skills Workshops**
 - Students required to attend at least 2 workshops
- **Living Learning Community**



SUMMER BRIDGE

- This summer, STEM Gateway is partnering with African American Student Services to offer a math-acceleration course utilizing the Math Learning Lab (MaLL) as part of a summer bridge program.

CEP MALL SUPPORT



Thank You